

# OUR LADY OF CONSOLATION

7056 Tulip Street

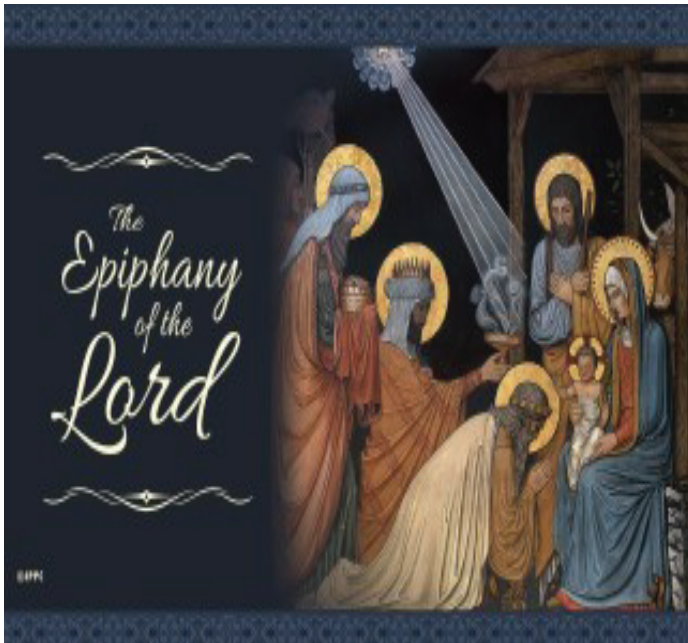
Philadelphia, PA 19135

Parish Office: 215-333-0442

Fax: 215-333-2884

Website: [www.olctaony.com](http://www.olctaony.com)

eGiving: [www.parishgiving.org](http://www.parishgiving.org)



## CONFESSIONS

Saturday: 4:00PM - 4:45PM

## MASS SCHEDULE

Saturday Vigil Mass: 5:00PM

Sundays: 8:00AM & 10:15AM

Spanish Language Mass: 11:30AM

Latin Tridentine Mass: 1:30PM

Weekdays & Holidays: 8:00AM

**LOVED ONES IN A NURSING HOME,  
HOME-BOUND, HOSPICE OR IN THE  
HOSPITAL? Please let the Rectory know so we  
can visit them.**

## FOOD BANK OPEN

**Mondays: 11:00AM to 1:00PM  
located on the Princeton Avenue  
entrance of the Rectory.**

***YOUR GENEROSITY IS ALWAYS  
APPRECIATED***

**Rev. Joseph L. Farrell, III PASTOR**  
**Rev. Francis A. Sariego, OFM.Cap**  
**Rev. Kevin Thompson, OFM.Cap**  
**Deacon Pascual Mota**

### Rectory Staff:

**Mr. John Duffner**  
Business Manager  
[jfdwwjd@gmail.com](mailto:jfdwwjd@gmail.com)

**Anna "Anita" Luciani** Parish Secretary  
[olc\\_aluc@comcast.net](mailto:olc_aluc@comcast.net)  
Secretaria Bilingüe  
Monday - Friday

**Deacon Pascual Mota**  
Director/Religious Education  
[pascual\\_mota@hotmail.com](mailto:pascual_mota@hotmail.com)

**Jim Callan**  
President  
Senior Citizens Group  
215-624-3447

### Rectory Hours

**Monday - Thursday 9:00AM - 4:00PM**  
**Friday 9:00AM - 1:00PM**

## DEVOTIONS

**Miraculous Medal Devotions:**  
**Novena Prayers - Saturday after 8:00AM Mass**

**ROSARY - Wednesday evenings at 6:30PM in Church**

**Baptismal Instruction: TBA**

**Classes are for first-time parents & held in the Church at  
7:00PM. Must attend Class before you schedule baptism.**

**Baptisms are held on Saturdays during the 5:00PM Mass  
or during the 10:15AM Mass on Sunday mornings, and  
Spanish baptisms are held during the 11:30AM Sunday  
of mass.**

**Parish Registration:** We welcome new parishioners to  
our Parish Family. Please call or stop by the Rectory to  
register with us. Also notify the rectory if you are  
planning to move.



From the  
**Pastor's Desk**

Today the Church celebrates the Solemnity of the Epiphany. "The Lord and ruler is coming; kingship is his, and government and power." With these words, the Church proclaims that today's feast brings to a perfect fulfillment all the purposes of Advent. Epiphany, therefore, marks the liturgical zenith of the Advent-Christmas season.



### **SANCTUARY CANDLE**

The Sanctuary Candle will burn this week in

**MEMORY OF: BARBARA ANN THAETE**  
r/b: Anita & Rob Luciani

If you have an intention for the Sanctuary Lamp, envelopes are available in the vestibule of church.

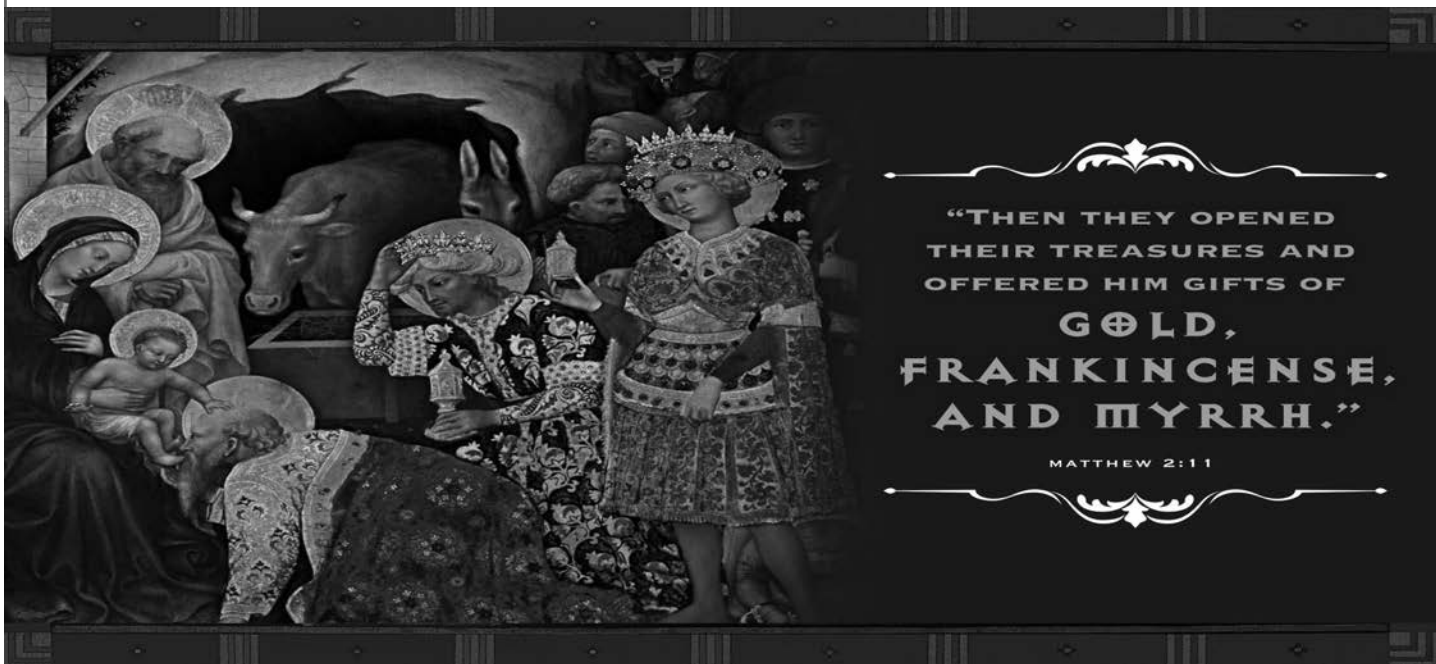
### **THANK YOU**

*Thank you to all our Parishioners, Friends & Families who contributed gift cards or cash so we could purchase gift cards for the Christmas Giving Tree. With your help, we were able to assist 30 families. Also, thank you to the AOH & Angels for their contributions in helping us with 8 families.*

*Your help and prayers are greatly appreciated.*

### **SUNDAY ENVELOPES / E-GIVING**

*You can mail or drop off your church envelopes at the Rectory door or put them in basket when church is open, we would be grateful. You can now sign up on the below link or scan the QR code to send your weekly contributions & other donations via e-giving. [www.parishgiving.org](http://www.parishgiving.org)*



“THEN THEY OPENED  
THEIR TREASURES AND  
OFFERED HIM GIFTS OF  
GOLD,  
FRANKINCENSE,  
AND MYRRH.”

MATTHEW 2:11

# EPIPHANY OF THE LORD

## JANUARY 2, 2022

### SATURDAY, JANUARY 1

8:00AM - For the People of the Parish

5:00PM - Moscato & Gatti Families

(The Family)

### SUNDAY, JANUARY 2

8:00AM - Anita Galan

(Georgiana Kennedy)

10:15AM - Richard Perugini

(Ted & Stephanie Erdman)

11:30AM - Nancy Palencia

(Betty Palencia)

1:30PM - Alex Rose

(Don Wicker)

### MONDAY, JANUARY 3

8:00AM - Special Intention: Jasmine Wu (Mom, Lin Wu)

### TUESDAY, JANUARY 4

8:00AM - Anita Galan

(Ted & Stephanie Erdman)

### WEDNESDAY, JANUARY 5

8:00AM - Fred Dieterle

6:30PM - ROSARY

(Edward Peters)

### THURSDAY, JANUARY 6

8:00AM - George, Helen & Jessica Cotter

(Eunice Cotter)

### FRIDAY, JANUARY 7

8:00AM - Frank Pizzo

(Lin Ping)

### SATURDAY, JANUARY 8

8:00AM - Barbara A. Marzulli

(Palermo Family)

5:00PM - 1st ANNIV: Libro Maio (Monica, Michael &

Rosemarie)

### SUNDAY, JANUARY 9

8:00AM - Jerry Crane

(Henry & Regina Crane)

10:15AM - Hank Benincasa (Mom, Antoinette Benincasa)

11:30AM -

1:30PM - Morgan Ball

(Don Wicker)

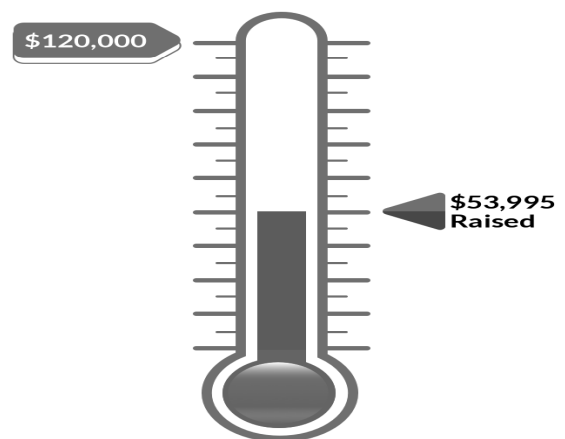


To add names to Prayer List please call the Rectory:

Rita Baldwin, Tom Cashley, Calloway Family, Marie Louise Cappuccio, Thomas Cappuccio, Rev. Dennis Carbonaro, Richard Cellucci, Joe, Marie, & Vince Cerellero, Debra Chialastri, Trisha & Dave Conway, Donna Coneghen, Stewart Davis, Rose DeLisi, Gloria DeShields, Doreen Douglas, Jim & Sissy Fox, Patty Galley, Louis Garzone, Joe Gatti, Pete Horn, David Howard, Nettie Hughes, Vicky Kihm, Anne Kuskin, Eva Johnson, Mary Maio, Rosemarie Maio, Kate Nelson, Theresa Niccoletti, Raymond Porres, Madeline Pryor, Kim Ramos, Amelia Rivera, Isabel Rivera, Norm Rohn, Laura Sabador, Ann Santoleri, Theresa Seiberlich, Ojona Thompson

REST IN PEACE: CHRISTINE MELFI

### Convent Goal



### ALTAR FLOWERS

#### IN MEMORY OF

#### People of the Parish

**SUNDAY - DECEMBER 19, 2021 \$5,210.**  
Immaculate Conception - \$411. / Christmas - \$1,520.

**SUNDAY - DECEMBER 26, 2021 \$ Next Week**

**SUNDAY - DECEMBER 27, 2020 \$8,682.**  
Christmas - \$1,407



### **O.L.C. SENIORS GROUP**

Our Lady of Consolation Seniors invite anyone over the age of 55 to join our organization. We meet every Monday in the Church Hall from 10am-2:30pm. We enjoy each other's company, and we have coffee & donuts, Bingo, Book Club, trips to shows and Casinos, Christmas party & closing Party. If interested in joining, please come down and join us or call Jim Callan at 215-624-3447 for more information. You don't have to be a member of O.L.C. to join.

### **N.S.C. GRUPO MAYORES**

Las personas mayores de Nuestra Señora de la Consolación invitan a cualquier persona mayor de 55 años a unirse a nuestra organización. Nos reunimos todos los lunes en el Salon de la Iglesia de 10 am a 2:30 pm. Disfrutamos de la compañía del otro, tenemos café y rosquillas, bingo, club de lectura, viajes a espectáculos y casinos, fiesta navideña y fiesta de clausura. Si está interesado en unirse, venga y únase a nosotros o llame a Jim Callan 215-624-3447 para mas informacion. No es necesario ser miembro de O.L.C.

---

### **O.L.C. BRIDGE CLUB**

The Bridge Club meets every Tuesday night from 6pm-8pm in the Rectory. Fr. Farrell runs the club. If you are interested in joining us, please call 215-333-0442. Parking lot can be accessed from Princeton Ave. between Edmund and Tulip St.

---

### **N.S.C. BRIDGE CLUB**

El Bridge Club se reúne todos los martes por la noche de 6 p. M. A 8 p. M., En la rectoría, el p. Farrell dirige el club. Si está interesado en unirse a nosotros, llame al 215-333-0442. Se puede acceder al estacionamiento desde Princeton Ave. entre Edmund y Tulip St.



## LETTERA DEL PARROCO

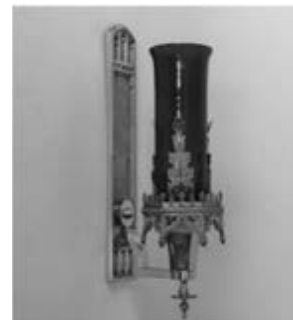
Hoy la Iglesia celebra la solemnidad de la Epifanía. "El Señor y gobernante viene; de él es la realeza, y el gobierno y el poder". Con estas palabras, la Iglesia proclama que la fiesta de hoy trae al perfecto cumplimiento todos los propósitos del Adviento. La epifanía, por tanto, marca el cenit litúrgico del tiempo de Adviento-Navidad.

### VELA DEL SANTUARIO

Lámpara del Santuario arderá esta semana en

**MEMORIA DE: BARBARA ANN THAETE**  
de: Anita y Rob Luciani

Si tiene una intención para la Lámpara del Santuario, los sobres están disponibles en el vestíbulo de la iglesia.



### GRACIAS

Gracias a todos nuestros feligreses, amigos y familias que contribuyeron con tarjetas de regalo o dinero en efectivo para que pudiéramos comprar tarjetas de regalo para el árbol de regalos de Navidad. Con su ayuda pudimos ayudar a 30 familias. Su ayuda y sus oraciones son muy apreciadas.

### SOBRES DOMINGOS / E-GIVING

Mientras esta crisis continúa, puede enviar por correo o dejar los sobres de su iglesia en nuestra puerta o ponerlos en la canasta cuando la iglesia esté abierta, estaremos agradecidos. Hemos introducido las donaciones electrónicas. Ahora puede registrarse en el enlace a continuación para enviar sus contribuciones semanales y otras donaciones a través de e-give o escaneat el código QR. [www.parishgiving.org](http://www.parishgiving.org)





# LOUIS C. GALZERANO FUNERAL HOME

9304 Old Bustleton Avenue  
Philadelphia, PA 19115

**215-624-2585**

Carl E. Price, Supv.

Serving Tacony Since 1935

Established 1977  
**MICHAEL'S GLASS Co.**  
4625 Knorr St.  
Phila, PA 19135  
**215-338-3293**  
Shower Door-Mirror-Tabletop-Auto  
[www.michaelsglassco.com](http://www.michaelsglassco.com)



# Walter J. Meyers Funeral Home, PC

Walter J. Meyers Jr., Supervisor

*We Are Moving...*

507 West Avenue, Jenkintown, PA 19046

*formerly of Tacony*

**215-338-3799**

James T. Meyers, FD  
Julia K. Meyers, FD

[www.meyersfh.com](http://www.meyersfh.com)

Timothy J. Meyers, FD  
Veronica (Meyers) Wardlow, Office Manager

## WORSHIP



WITH US

## catholicmatch®

Pennsylvania



[CatholicMatch.com/datePA](http://CatholicMatch.com/datePA)



Make a Difference in Your Community

**VOLUNTEER**

with the American Red Cross

Join today at [redcross.org/Volunteer](http://redcross.org/Volunteer)

## JOSEPH A. SANNUTTI FUNERAL HOME

Professional Personal Family Operated Service

7101 Torresdale Avenue  
Philadelphia, PA 19135

**215-333-4949**

Pre-Arranged Funerals Upon Request  
Cemetery Monuments • Home Appointments



## ST. JOHN NEUMANN CENTER

A Catholic-Faith Short Term Rehab  
and Long Term Care Facility

Healing the Mind, Body and Soul

Accepts Admissions 24/7 • Therapy Available 7 days a week



SHORT TERM CARE



LONG TERM CARE



RESPIRE CARE

### Services

Cardiac Care • Memory Support • Wound Care  
Orthopedic Rehab • Stroke Recovery • Neuromuscular Care • Post-surgical Rehab  
Pulmonary Care ...and more!

10400 Roosevelt Blvd.  
Philadelphia, PA 19116

[215-698-5600/www.stjnrehab.org](http://215-698-5600/www.stjnrehab.org)

Wouldn't your business look GREAT in this spot?!

To advertise call  
1.800.333.3166  
ext.161

[www.jpcc.net](http://www.jpcc.net)



Commercial Rates are at an **All Time Low**. Contact us today to get a free analysis to see if we can help **Save you money** with your monthly payments on your commercial property. Multi-Family, Retail, Office Building, Apartment and Condos. Can close in as little as 45 days! Four season customer service is our top priority.

[www.duqfunding.com](http://www.duqfunding.com)

1650 Market Street - Suite 3600, Philadelphia, PA 19103



Providing excellent care for at-risk adolescents in a group home setting

### Open Positions:

Youth Care Workers, Teacher,  
Educational Support Staff,  
Case Liaison and Clinical Therapist

3400 Bristol Pike • Bensalem, PA 19020

<https://sfsj.org> **215-642-3091**

## Mallory's Army Foundation

United Together In The Fight Against Bullying...  
Don't Just Teach Kindness... BE KINDNESS!



[www.MallorysArmy.com](http://www.MallorysArmy.com)  
(973) 440-8657 • [info@mallorysarmy.org](mailto:info@mallorysarmy.org)

It's easy to join our mailing list! Just send your email address by text message:  
Text MALLORYSARMY to 22828 to get started.

Message and data rates may apply.

Special Savings Offer  
for All Parish Members!



**50% DISCOUNT ON BURIAL SPACE**

Advance Planning helps save families from emotional and financial burdens at the time of death!

CALL  
**215.302.9379**

Resurrection Cemetery

[www.PhiladelphiaCatholicCemeteries.com](http://www.PhiladelphiaCatholicCemeteries.com)

## RIDESHARE ZONE

**S** top  
**A** sk  
**M** atch  
**I** nform

**#WHATSMYNAME**



## OUR SPONSORS & OUR COMMUNITY

Sponsors can offer promotions, discounts and/or up-to-date contact information to the **ENTIRE** community

Finding **FABER**

**ANYONE** in the community, not only Parishioners, can access realtime offers from their favorite sponsors to save, share & support

